



CALENDAR - 2025-26

SELF DISCOVERY

LEADERSHIP LAUNCHPAD

GLOBAL EXPLORERS

PIONEERS OF CHANGE

LEGACY BUILDERS

ROAD TO GREATNESS

BEYOND BOUNDARIES

EXPRESS YOURSELF

MINDFUL MOMENTS

GAME-BASED LEARNING

STEM ODYSSEY

INNOVATORS IGNITED

ELEVATE

Empowering Minds Enriching Futures

“The future belongs to those who believe in the beauty of their dreams and dare to push beyond boundaries.”

At Smart Wonders, we believe that a student's true potential knows no bounds. Our theme for the new session, “Beyond Boundaries,” embodies our dedication to fostering a culture of exploration, innovation, and inclusivity, empowering every learner to excel without limits. We believe that every student holds the potential for greatness, irrespective of their differences. Our mission is to nurture a supportive environment where students are encouraged to step beyond their comfort zones, challenge oneself and explore new horizons.

As you journey through the pages of this calendar, we invite you to embrace the spirit of “Beyond Boundaries” with us.

APRIL

2025

| M | T | W | T | F | S | S |
|----|----|----|----|----|----|----|
| | 1 | 2 | 3 | 4 | 5 | 6 |
| 7 | 8 | 9 | 10 | 11 | 12 | 13 |
| 14 | 15 | 16 | 17 | 18 | 19 | 20 |
| 21 | 22 | 23 | 24 | 25 | 26 | 27 |
| 28 | 29 | 30 | | | | |



SWS

MOHALI



APRIL

2025

MON TUE WED THU FRI SAT SUN

| MON | TUE | WED | THU | FRI | SAT | SUN |
|---------------------------------------|---|-------------------------------------|--------------------------------------|----------------------------------|-----|-------------------------|
| | INDUCTION OF CLASSES UKG-1 01 | SESSION 2025-26 BEGINS 02 | | | | RAM NAVAMI 06 |
| WORLD HEALTH DAY 07 | BIRTHDAY OF SRI GURU NABHA DASS JI HOLIDAY 08 | | MAHAVIR JAYANTI HOLIDAY 10 | | | BAISAKHI 13 |
| AMBEDKAR JAYANTI HOLIDAY 14 | | | | GOOD FRIDAY HOLIDAY 18 | | |
| | EARTH DAY 22 | | | | | |
| 21 | | | | | | |
| | LORD PARSHURAM JAYANTI HOLIDAY 29 | | | | | |
| 28 | | | | | | |
| | | | | | | |

SELF DISCOVERY

CLASSES : UKG - 2

- ◆ Uniquely Me
- ◆ World Health Day
- ◆ Baisakhi
- ◆ Trash To Treasure

CLASSES : 3 - 5

- ◆ JAM
- ◆ World Health Day
- ◆ Baisakhi
- ◆ Earth Day

CLASSES : 6 - 10

- ◆ Baisakhi
- ◆ Easter Celebration
- ◆ Talent Show
- ◆ Earth Day
- ◆ Basketball Tournament
- ◆ Football Tournament



SMART WONDERS
SCHOOL

CONFIDENT | COMPETENT | CARING

Sector 71, Mohali

T: +91 172 2270063-65, 9914815444

www.smartwonderschool.com

MAY

2025

| M | T | W | T | F | S | S |
|----|----|----|----|----|----|----|
| | | | 1 | 2 | 3 | 4 |
| 5 | 6 | 7 | 8 | 9 | 10 | 11 |
| 12 | 13 | 14 | 15 | 16 | 17 | 18 |
| 19 | 20 | 21 | 22 | 23 | 24 | 25 |
| 26 | 27 | 28 | 29 | 30 | 31 | |



SWS

MOHALI



MAY

2025

MON TUE WED THU FRI SAT SUN

| MON | TUE | WED | THU | FRI | SAT | SUN |
|-----|-----|-----|--------------------------------|---|--|--------------------------|
| | | | MAY DAY HOLIDAY 01 | 02 | INVESTITURE CEREMONY 03 | WORLD LAUGHTER DAY 04 |
| 05 | 06 | 07 | 08 | 09 | MOTHERS' DAY CELEBRATION 10 | 11 |
| 12 | 13 | 14 | INTERNATIONAL FAMILY DAY 15 | 16 | PTM FOR CLASSES UKG-5 17 | 18 |
| 19 | 20 | 21 | 22 | 23 | PTM FOR CLASSES 6-10 24 | 25 |
| 26 | 27 | 28 | 29 | MARTYRDOM DAY OF SRI ARJAN DEV JI HOLIDAY 30 | SUMMER BREAK BEGINS FOR CLASSES UKG-10 31 | |
| | | | | | | |

LEADERSHIP LAUNCHPAD

CLASSES : UKG - 2

- ◆ World Laughter Day
- ◆ Mothers' Day
- ◆ Summer Splash Fest
- ◆ Pyjama Party

CLASSES : 3 - 5

- ◆ World Laughter Day
- ◆ Mothers' Day Celebration
- ◆ English Spell Bee Challenge
- ◆ Summer Fiesta

CLASSES : 6 - 10

- ◆ Investiture Ceremony
- ◆ Labour Day
- ◆ International Family Day
- ◆ Basketball Tournament
- ◆ Football Tournament



SMART WONDERS
SCHOOL

CONFIDENT | COMPETENT | CARING

Sector 71, Mohali

T: +91 172 2270063-65, 9914815444

www.smartwonderschool.com

JUNE

2025

| M | T | W | T | F | S | S |
|----|----|----|----|----|----|----|
| 30 | | | | | | 1 |
| 2 | 3 | 4 | 5 | 6 | 7 | 8 |
| 9 | 10 | 11 | 12 | 13 | 14 | 15 |
| 16 | 17 | 18 | 19 | 20 | 21 | 22 |
| 23 | 24 | 25 | 26 | 27 | 28 | 29 |



SWS
MOHALI



JUNE

2025

MON TUE WED THU FRI SAT SUN

| MON | TUE | WED | THU | FRI | SAT | SUN |
|-----|-----|-----------------------|-----------------------|-----|------------------------|-----|
| | | | | | | 01 |
| 02 | 03 | 04 | WORLD ENVIRONMENT DAY | 05 | BAKR ID HOLIDAY | 08 |
| 09 | 10 | KABIR JAYANTI HOLIDAY | 12 | 13 | 14 | 15 |
| 16 | 17 | 18 | 19 | 20 | INTERNATIONAL YOGA DAY | 22 |
| 23 | 24 | 25 | 26 | 27 | 28 | 29 |
| 30 | | | | | | |

GLOBAL EXPLORERS

CLASSES : 3 - 5

- ◆ Ek Bharat Shreshth Bharat: Celebrating Unity

CLASSES : 6 - 10

- ◆ Ek Bharat Shreshth Bharat: Celebrating Unity



SMART WONDERS
SCHOOL

CONFIDENT | COMPETENT | CARING

Sector 71, Mohali

T: +91 172 2270063-65, 9914815444

www.smartwonderschool.com

JULY

2025

| M | T | W | T | F | S | S |
|----|----|----|----|----|----|----|
| | 1 | 2 | 3 | 4 | 5 | 6 |
| 7 | 8 | 9 | 10 | 11 | 12 | 13 |
| 14 | 15 | 16 | 17 | 18 | 19 | 20 |
| 21 | 22 | 23 | 24 | 25 | 26 | 27 |
| 28 | 29 | 30 | 31 | | | |



SWS

MOHALI



JULY

2025

MON TUE WED THU FRI SAT SUN

| MON | TUE | WED | THU | FRI | SAT | SUN |
|-----|--|-----|-----|----------------------------|-------------------|-----|
| | STUDENTS OF CLASSES UKG-10 REJOIN AFTER SUMMER BREAK 01 | 02 | 03 | 04 | 05 | 06 |
| 07 | 08 | 09 | 10 | WORLD POPULATION DAY 11 | 12 | 13 |
| 14 | 15 | 16 | 17 | 18 | 19 | 20 |
| 21 | 22 | 23 | 24 | 25 | VIJAY DIWAS 26 | 27 |
| 28 | 29 | 30 | 31 | | | |
| | | | | | | |

PIONEERS OF CHANGE

CLASSES : UKG - 2

- ◆ Tree Tales
- ◆ Green Glamour Runway

CLASSES : 3 - 5

- ◆ Eco Crusaders
- ◆ Hindi Kavita Vachan
- ◆ Twist A Tale
- ◆ Dodge Ball Match
- ◆ Kho Kho Match

CLASSES : 6 - 10

- ◆ Van Mahotsav
- ◆ Speak To Lead
- ◆ Vijay Diwas



SMART WONDERS
SCHOOL

CONFIDENT | COMPETENT | CARING

Sector 71, Mohali

T: +91 172 2270063-65, 9914815444

www.smartwonderschool.com

AUGUST

2025

| M | T | W | T | F | S | S |
|----|----|----|----|----|----|----|
| | | | | 1 | 2 | 3 |
| 4 | 5 | 6 | 7 | 8 | 9 | 10 |
| 11 | 12 | 13 | 14 | 15 | 16 | 17 |
| 18 | 19 | 20 | 21 | 22 | 23 | 24 |
| 25 | 26 | 27 | 28 | 29 | 30 | 31 |



SWS

MOHALI



AUGUST

2025

MON TUE WED THU FRI SAT SUN

| MON | TUE | WED | THU | FRI | SAT | SUN |
|-----|-----|-----|-----|--|---|-----|
| | | | | SWS CONFLUENCE 01 | SWS CONFLUENCE 02 | 03 |
| 04 | 05 | 06 | 07 | 08 | RAKSHA BANDHAN HOLIDAY 09 | 10 |
| 11 | 12 | 13 | 14 | INDEPENDENCE DAY CELEBRATION 15 | JANMASHTAMI HOLIDAY 16 | 17 |
| 18 | 19 | 20 | 21 | 22 | 23 | 24 |
| 25 | 26 | 27 | 28 | HALF YEARLY EXAMS BEGIN FOR CLASSES 6-10 29 | HALF YEARLY EXAMS BEGIN FOR CLASSES 3-5 30 | 31 |
| | | | | | | |

LEGACY BUILDERS

CLASSES : UKG - 2

- ♦ Warriors Of Independence (Fancy Dress)
- ♦ Midnight Miracle (Janmashtami Celebration)
- ♦ National Sports Day

CLASSES : 3 - 5

- ♦ Incredible India
- ♦ Math Relay
- ♦ Kho Kho Match

CLASSES : 6 - 10

- ♦ Independence Day Celebration
- ♦ Strings of Affection



SMART WONDERS
SCHOOL

CONFIDENT | COMPETENT | CARING

Sector 71, Mohali

T: +91 172 2270063-65, 9914815444

www.smartwonderschool.com

SEPTEMBER

2025

| M | T | W | T | F | S | S |
|----|----|----|----|----|----|----|
| 1 | 2 | 3 | 4 | 5 | 6 | 7 |
| 8 | 9 | 10 | 11 | 12 | 13 | 14 |
| 15 | 16 | 17 | 18 | 19 | 20 | 21 |
| 22 | 23 | 24 | 25 | 26 | 27 | 28 |
| 29 | 30 | | | | | |



SWS

MOHALI



SEPTEMBER

2025

MON TUE WED THU FRI SAT SUN

| | | | | | | |
|--|----|----|--|---|-----------------------------------|---------------------------------|
| PRAKASH UTSAV SRI GURU GRANTH SAHIB JI HOLIDAY 01 | 02 | 03 | 04 | TEACHER'S DAY 05 | 06 | 07 |
| 08 | 09 | 10 | HALF YEARLY EXAMS FINISH FOR CLASSES 3-5 11 | HALF YEARLY EXAMS FINISH FOR CLASSES 6-10 12 | 13 | 14 |
| 15 | 16 | 17 | 18 | 19 | PTM FOR CLASSES UKG-5 20 | WORLD GRATITUDE DAY 21 |
| AGARSEN JAYANTI HOLIDAY 22 | 23 | 24 | 25 | GRAND PARENTS' DAY CELEBRATION UKG -2 26 | PTM FOR CLASSES 6-10 27 | 28 |
| 29 | 30 | | | | | |

ROAD TO GREATNESS

CLASSES : UKG - 2

- ◆ Dear Program
- ◆ Chote Kavi Badi Kalpnaay (Hindi Poetry Recitation)
- ◆ Grandparent's Day
- ◆ World Gratitude Day

CLASSES : 3 - 5

- ◆ Nourish To Flourish
- ◆ Dear Program
- ◆ EVS Exhibition
- ◆ World Gratitude Day

CLASSES : 6 - 10

- ◆ Tourism Day
- ◆ Career Counselling
- ◆ Basketball Tournament
- ◆ Football Tournament



SMART WONDERS
SCHOOL

CONFIDENT | COMPETENT | CARING

Sector 71, Mohali

T: +91 172 2270063-65, 9914815444

www.smartwonderschool.com

OCTOBER

2025

| M | T | W | T | F | S | S |
|----|----|----|----|----|----|----|
| | | 1 | 2 | 3 | 4 | 5 |
| 6 | 7 | 8 | 9 | 10 | 11 | 12 |
| 13 | 14 | 15 | 16 | 17 | 18 | 19 |
| 20 | 21 | 22 | 23 | 24 | 25 | 26 |
| 27 | 28 | 29 | 30 | 31 | | |



SWS
MOHALI



OCTOBER

2025

MON TUE WED THU FRI SAT SUN

| MON | TUE | WED | THU | FRI | SAT | SUN | | | | |
|-------------------|--|-------------------------------|---|-----------------------|----------------------------|--|----|----|----|----|
| | | 01 | MAHATMA GANDHI JAYANTI DUSSEHRA HOLIDAY | 02 | 03 | 04 | 05 | | | |
| 06 | MAHARISHI VALMIKI JAYANTI HOLIDAY | 07 | 08 | 09 | KARVA CHAUTH HOLIDAY | 10 | 11 | 12 | | |
| 13 | 14 | 15 | 16 | WORLD FOOD DAY | 17 | DIWALI BREAK BEGINS FOR CLASSES UKG-10 | 18 | 19 | | |
| DIWALI HOLIDAY | 20 | VISHWAKARMA DAY HOLIDAY | 21 | BHAI DOOJ HOLIDAY | 22 | SCHOOL REOPENS AFTER DIWALI BREAK | 23 | 24 | 25 | 26 |
| 27 | 28 | 29 | 30 | NATIONAL UNITY DAY | 31 | HALLOWEEN DAY | | | | |
| | | | | | | | | | | |

EXPRESS YOURSELF

CLASSES : UKG - 2

- ◆ Gandhi Jayanti
- ◆ Festive Footprints
- ◆ Halloween Day

CLASSES : 3 - 5

- ◆ Reliving the Mahatma
- ◆ Diwali
- ◆ Outdoor Adventure
- ◆ Dodgeball
- ◆ Kho Kho Match

CLASSES : 6 - 10

- ◆ World Food Day
- ◆ Diwali
- ◆ Outdoor Adventure
- ◆ Basketball Tournament
- ◆ Cricket Tournament



SMART WONDERS
SCHOOL

CONFIDENT | COMPETENT | CARING

Sector 71, Mohali

T: +91 172 2270063-65, 9914815444

www.smartwonderschool.com

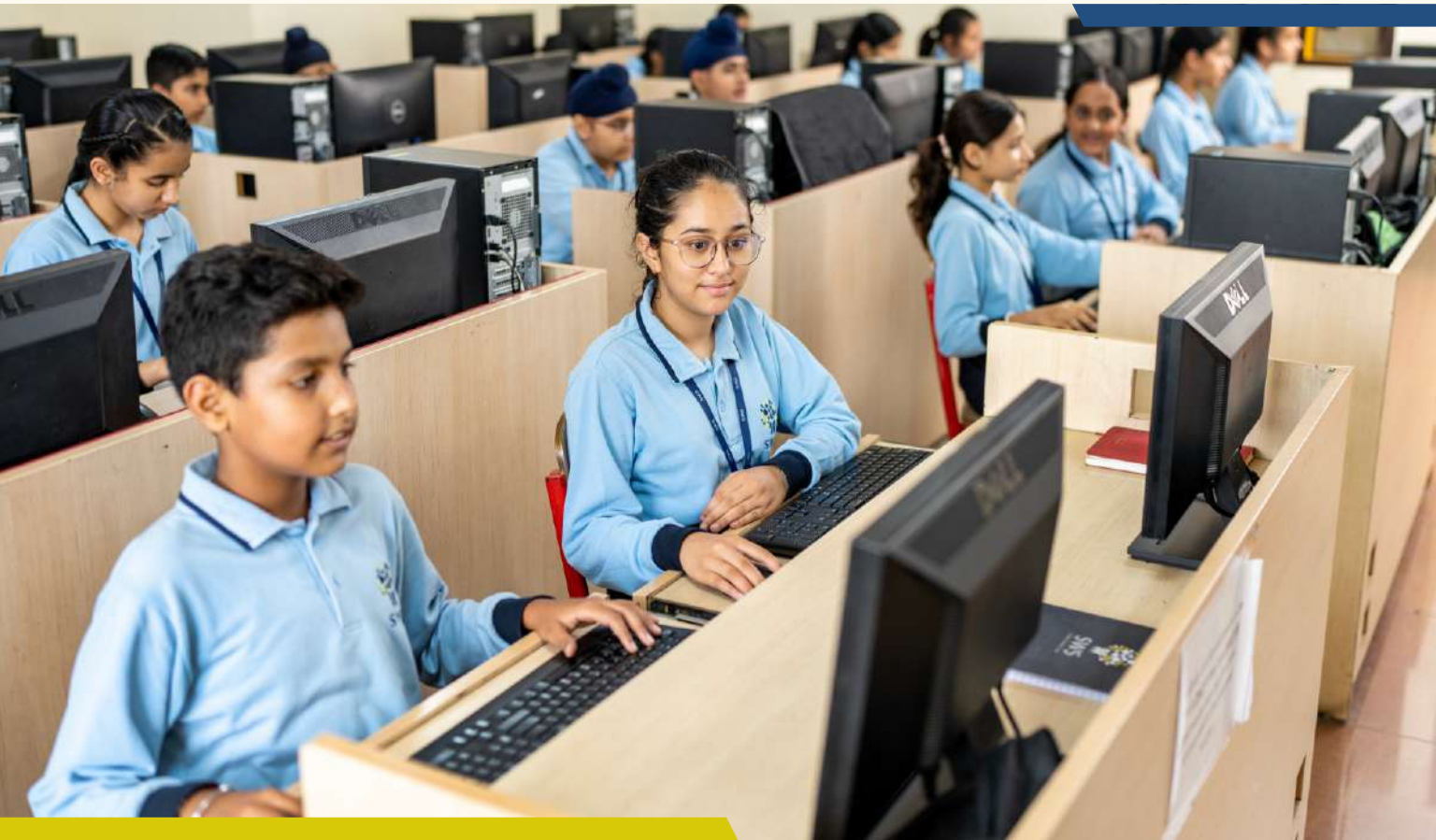
NOVEMBER

2025

| M | T | W | T | F | S | S |
|----|----|----|----|----|----|----|
| | | | | | 1 | 2 |
| 3 | 4 | 5 | 6 | 7 | 8 | 9 |
| 10 | 11 | 12 | 13 | 14 | 15 | 16 |
| 17 | 18 | 19 | 20 | 21 | 22 | 23 |
| 24 | 25 | 26 | 27 | 28 | 29 | 30 |



SWS
MOHALI



NOVEMBER

2025

MON TUE WED THU FRI SAT SUN

| MON | TUE | WED | THU | FRI | SAT | SUN |
|-----|---|----------------------------------|---|---|---|---|
| | | | | | 01 | 02 |
| | | GURU NANAK JAYANTI HOLIDAY | | ANNUAL SHOW UKG -2 | ANNUAL SHOW UKG -2 | |
| 03 | 04 | 05 | 06 | 07 | 08 | 09 |
| | | | | ANNUAL SPORTS MEET (REHEARSAL) CLASSES 6-10 CHILDREN'S DAY | ANNUAL SPORTS MEET CLASSES 6-10 | SHAHEEDI DIWAS KARTAR SINGH SARABHA |
| 10 | 11 | 12 | 13 | 14 | 15 | 16 |
| | | | | | | |
| 17 | 18 | 19 | 20 | 21 | 22 | 23 |
| | SRI GURU TEG BAHADUR JI'S MARTYRDOM DAY HOLIDAY | CONSTITUTION DAY | ANNUAL SHOW REHEARSAL CLASSES 3-5 | | ANNUAL SHOW CLASSES 3-5 | |
| 24 | 25 | 26 | 27 | 28 | 29 | 30 |
| | | | | | | |

MINDFUL MOMENTS

CLASSES : UKG - 2

- ◆ Annual Show
- ◆ Picnic
- ◆ Gurpurab

CLASSES : 3 - 5

- ◆ Annual Show
- ◆ Gurpurab
- ◆ Mental Health Awareness

CLASSES : 6 - 10

- ◆ Annual Sports Meet
- ◆ Gurpurab
- ◆ Mental Health Awareness
- ◆ Constitution Day



SMART WONDERS
SCHOOL

CONFIDENT | COMPETENT | CARING

Sector 71, Mohali

T: +91 172 2270063-65, 9914815444

www.smartwonderschool.com

DECEMBER

2025

| M | T | W | T | F | S | S |
|----|----|----|----|----|----|----|
| 1 | 2 | 3 | 4 | 5 | 6 | 7 |
| 8 | 9 | 10 | 11 | 12 | 13 | 14 |
| 15 | 16 | 17 | 18 | 19 | 20 | 21 |
| 22 | 23 | 24 | 25 | 26 | 27 | 28 |
| 29 | 30 | 31 | | | | |



SWS
MOHALI



DECEMBER

2025

MON TUE WED THU FRI SAT SUN

| MON | TUE | WED | THU | FRI | SAT | SUN |
|-----|-----|------------------|---|-----|--|-----|
| 01 | 02 | 03 | 04 | 05 | PTM FOR CLASSES UKG-5 | 07 |
| 08 | 09 | HUMAN RIGHTS DAY | 11 | 12 | PTM FOR CLASSES 6-10 | 14 |
| 15 | 16 | 17 | 18 | 19 | MUSICAL MUNCHKINS | 21 |
| 22 | 23 | 24 | CHRISTMAS WINTER BREAK BEGINS FOR CLASSES UKG -10 | 26 | SHAHEEDI SABHA SRI FATEHGARH SAHIB HOLIDAY | 28 |
| 29 | 30 | 31 | | | | |

GAME-BASED LEARNING

CLASSES : UKG - 2

- ◆ The Mistletoe Magic
- ◆ Musical Munchkins
- ◆ Joy of Giving

CLASSES : 3 - 5

- ◆ Glimpse of Learning
- ◆ Christmas Celebration
- ◆ Joy of Giving
- ◆ Kho Kho Match

CLASSES : 6 - 10

- ◆ Christmas Celebration
- ◆ Veer Bal Diwas
- ◆ Mathematic Quest- A Gamified Adventure
- ◆ Basketball Tournament



SMART WONDERS
SCHOOL

CONFIDENT | COMPETENT | CARING

Sector 71, Mohali

T: +91 172 2270063-65, 9914815444

www.smartwonderschool.com

JANUARY

2026

| M | T | W | T | F | S | S |
|----|----|----|----|----|----|----|
| | | | 1 | 2 | 3 | 4 |
| 5 | 6 | 7 | 8 | 9 | 10 | 11 |
| 12 | 13 | 14 | 15 | 16 | 17 | 18 |
| 19 | 20 | 21 | 22 | 23 | 24 | 25 |
| 26 | 27 | 28 | 29 | 30 | 31 | |



SWS
MOHALI



JANUARY

2026

MON TUE WED THU FRI SAT SUN

| MON | TUE | WED | THU | FRI | SAT | SUN |
|--|--------------------------------------|-----|-----|--------------------------------|---------------------------------|-----|
| | | | 01 | 02 | 03 | 04 |
| 05 | 06 | 07 | 08 | 09 | 10 | 11 |
| STUDENTS OF CLASSES UKG-10 REJOIN AFTER WINTER BREAK | | | | | | |
| 12 | 13 | 14 | 15 | 16 | 17 | 18 |
| | GURU GOBIND SINGH JI JAYANTI HOLIDAY | | | ATHLETES IN ACTION UKG-2 | | |
| 19 | 20 | 21 | 22 | 23 | 24 | 25 |
| REPUBLIC DAY CELEBRATION | REPUBLIC DAY HOLIDAY | | | ATHLETES IN ACTION CLASSES 3-5 | FINAL EXAMS BEGIN FOR CLASS - 9 | |
| 26 | 27 | 28 | 29 | 30 | 31 | |
| | | | | | | |

STEM ODYSSEY

CLASSES : UKG - 2

- ◆ Science Sparks (Fun With Experiments)
- ◆ Republic Day
- ◆ Athletes In Action

CLASSES : 3 - 5

- ◆ EVS Quiz
- ◆ Igniting Tech Buzz
- ◆ Athletes In Action
- ◆ Republic Day

CLASSES : 6 - 10

- ◆ Republic Day Celebration
- ◆ Science Trivia



SMART WONDERS
SCHOOL

CONFIDENT | COMPETENT | CARING

Sector 71, Mohali

T: +91 172 2270063-65, 9914815444

www.smartwonderschool.com

FEBRUARY

2026

| M | T | W | T | F | S | S |
|----|----|----|----|----|----|----|
| | | | | | | 1 |
| 2 | 3 | 4 | 5 | 6 | 7 | 8 |
| 9 | 10 | 11 | 12 | 13 | 14 | 15 |
| 16 | 17 | 18 | 19 | 20 | 21 | 22 |
| 23 | 24 | 25 | 26 | 27 | 28 | |



SWS
MOHALI



FEBRUARY

2026

MON TUE WED THU FRI SAT SUN

| MON | TUE | WED | THU | FRI | SAT | SUN |
|---|-----|-----|---|--------------------------------------|-------------------------|-----------------------------|
| | | | | | | GURU RAVI DAS JAYANTI 01 |
| 02 | 03 | 04 | 05 | 06 | 07 | 08 |
| 09 | 10 | 11 | 12 | 13 FINAL EXAMS FINISH FOR CLASS-9 | 14 | 15 MAHA SHIVRATRI |
| 16 | 17 | 18 | 19 FINAL EXAMS BEGIN FOR CLASSES 6-8 | 20 | 21 PTM FOR CLASS - 9 | 22 |
| 23 FINAL EXAMS BEGIN FOR CLASSES 2-5 | 24 | 25 | 26 | 27 | 28 | |
| | | | | | | |

INNOVATORS IGNITED

CLASSES : UKG - 2

- ◆ Brain Buzz
- ◆ Basant Panchami

CLASSES : 3 - 5

- ◆ Spring Time Tales
- ◆ Voices of Tomorrow- Declamation

CLASSES : 6 - 10

- ◆ Basant Panchami
- ◆ Future You : Vision Board



SMART WONDERS
SCHOOL

CONFIDENT | COMPETENT | CARING

Sector 71, Mohali

T: +91 172 2270063-65, 9914815444

www.smartwonderschool.com

MARCH

2026

| M | T | W | T | F | S | S |
|----|----|----|----|----|----|----|
| 30 | 31 | | | | | 1 |
| 2 | 3 | 4 | 5 | 6 | 7 | 8 |
| 9 | 10 | 11 | 12 | 13 | 14 | 15 |
| 16 | 17 | 18 | 19 | 20 | 21 | 22 |
| 23 | 24 | 25 | 26 | 27 | 28 | 29 |



SWS
MOHALI



MARCH

ELEVATE

2026

MON TUE WED THU FRI SAT SUN

| MON | TUE | WED | THU | FRI | SAT | SUN |
|---|---|-----------------|-----|---|---|-----|
| | | | | | | 01 |
| 02 | FINAL EXAMS FINISH FOR CLASSES 6-8 | HOLI HOLIDAY | 05 | FINAL EXAMS FINISH FOR CLASSES 2-5 | GRADUATION DAY AND PTM FOR UKG | 08 |
| 09 | 10 | 11 | 12 | 13 | PTM FOR CLASSES 1-8 | 15 |
| 16 | 17 | 18 | 19 | 20 | 21 | 22 |
| BHAGAT SINGH SHAHADAT DIWAS HOLIDAY | 24 | 25 | 26 | 27 | 28 | 29 |
| 30 | 31 | | | | | |

ELEVATE



SMART WONDERS
SCHOOL

CONFIDENT | COMPETENT | CARING

Sector 71, Mohali

T: +91 172 2270063-65, 9914815444

www.smartwonderschool.com



SMART WONDERS SCHOOL

CONFIDENT | COMPETENT | CARING

Sector 71, Mohali. T.: +91172 2270063-65, 9914815444

official@smartwonderschool.com | www.smartwonderschool.com

FIND US ON

